



## Windsor Gate 110 Bath Road, Slough, SL1 3FY £895 PCM



CONTEMPORARY & FURNISHED studio apartment with SEPARATE KITCHEN and ALLOCATED PARKING AVAILABLE!

Large lounge/living area, separate modern kitchen fitted with white goods & luxury bathroom with shower over bath.

This property boasts natural light throughout along with secure video entry system.

**\*\* LIFT \*\* CENTRAL LOCATION \*\* CLOSE TO LOCAL SHOPS \*\* EXCELLENT TRAVEL LINKS \*\* 15 MINS WALK TO THE TRAIN STATION \*\* MINUTES FROM M4 ACCESS \*\* TOP FLOOR FLAT \*\* FURNISHED \*\***

VIEWINGS HIGHLY RECOMMENDED.

EPC Rating:D  
Council Tax Band:A

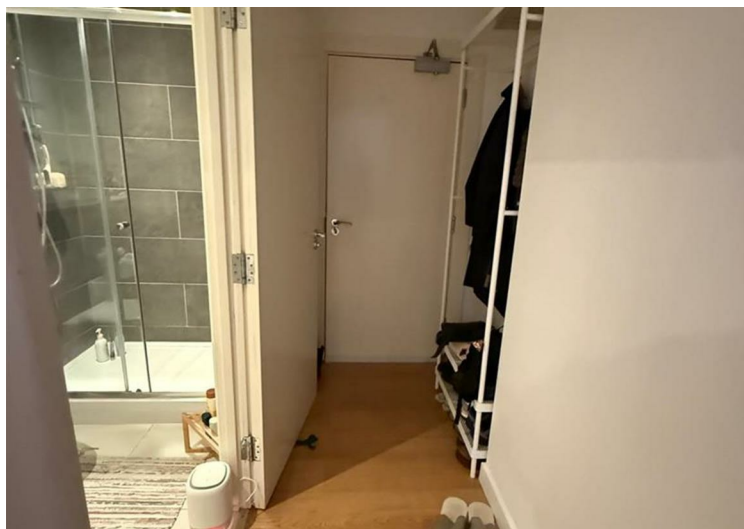
### Viewing

To arrange a viewing on this property or require further information please contact one of our team on 01202 315 800





Energy Efficiency Rating		Current	Potential
Vary energy efficient - lower running costs			
(92 plus) A			
(81-91) B			
(69-80) C			
(55-68) D		65	65
(39-54) E			
(21-38) F			
(1-20) G			
Not energy efficient - higher running costs			
<b>England &amp; Wales</b>		EU Directive 2002/91/EC	



These particulars, whilst believed to be accurate are set out as a general outline only for guidance and do not constitute any part of an offer or contract. Intending purchasers should not rely on them as statements of representation of fact, but must satisfy themselves by inspection or otherwise as to their accuracy. No person in this firm's employment has the authority to make or give any representation or warranty in respect of the property.